

# **MSF EASTERN AFRICA**

## **CARBON FOOTPRINT REPORT,**

### **2023**



**FINAL REPORT**  
**MAY, 2024**

## ACKNOWLEDGEMENT

This report acknowledges the support of our finance department, admins and travel, the management of MSF Eastern Africa, and all staff who participated in making it a success as we strive for a 50% reduction in our carbon footprint.

We would also like to thank members of the *Green Bean team* who push for carbon reduction and environmental protection measures in the office, and climate smart MSF across the whole movement.

Prepared by:

*Emmanuel Yussuf, Climate Smart Support, MSF Eastern Africa*

## INTRODUCTION

MSF made a commitment in reducing our carbon emissions by 50% come 2030, and part of achieving this objective is to monitor our carbon footprint. Through the Environmental Impact Toolkit, we are able to compute our carbon emissions from various sources and keep monitoring each year.

At MSF Eastern Africa, our numbers have been growing since 2019 at 39 staff members, to 176 as of 2023. This increase in number has led to an increase in our emissions from the various sources, with flights being the highest source of emission.

### *Carbon emissions*

The concept of emissions was introduced by The Greenhouse Gas protocol in 1990, to define how organizations/companies both private and public, control emissions it is responsible for.

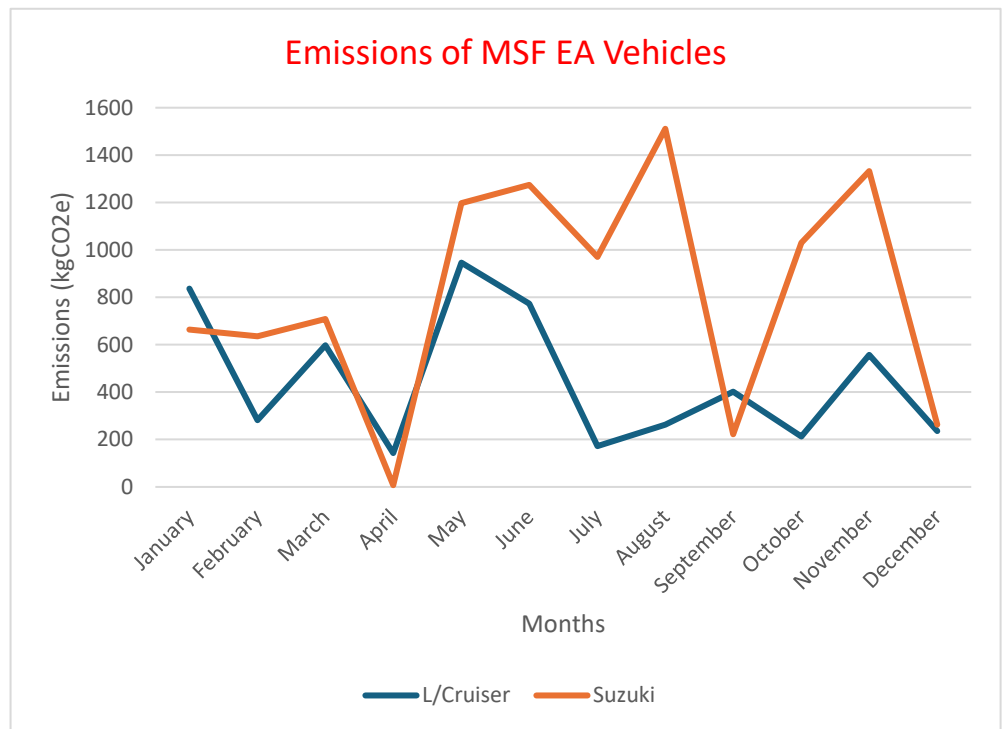
While there are different sources of emissions, the terms scope 1, 2 and 3 have been used to represent direct emissions, indirect emissions from energy use and indirect emissions (those not controlled directly by company/organizations) respectively.

**Note:** Our computations will include sources from electricity, vehicles operated by MSF EA, commuting and flights.

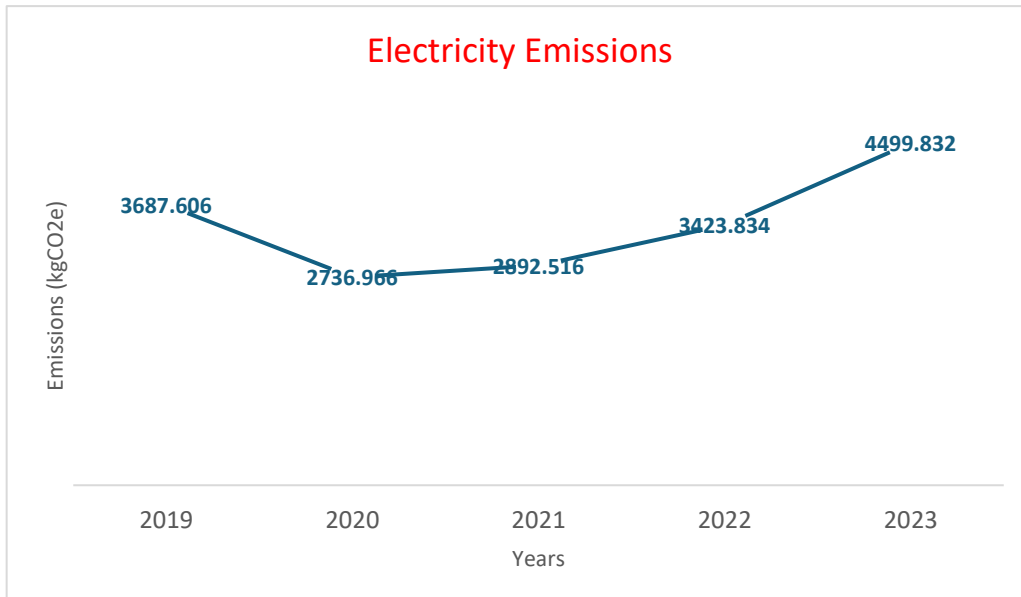
### Scope 1: Direct emissions

Direct carbon emissions come from sources owned and/or controlled by an organization. In our case, the MSF EA vehicles at our disposal.

In 2023, emissions from our Suzuki Ertiga were higher than at 9.8 tons of CO<sub>2</sub>e compared to 5.4 tons for the Land cruiser, with the highest peak in the month of August.



### Scope 2: Indirect emissions from energy

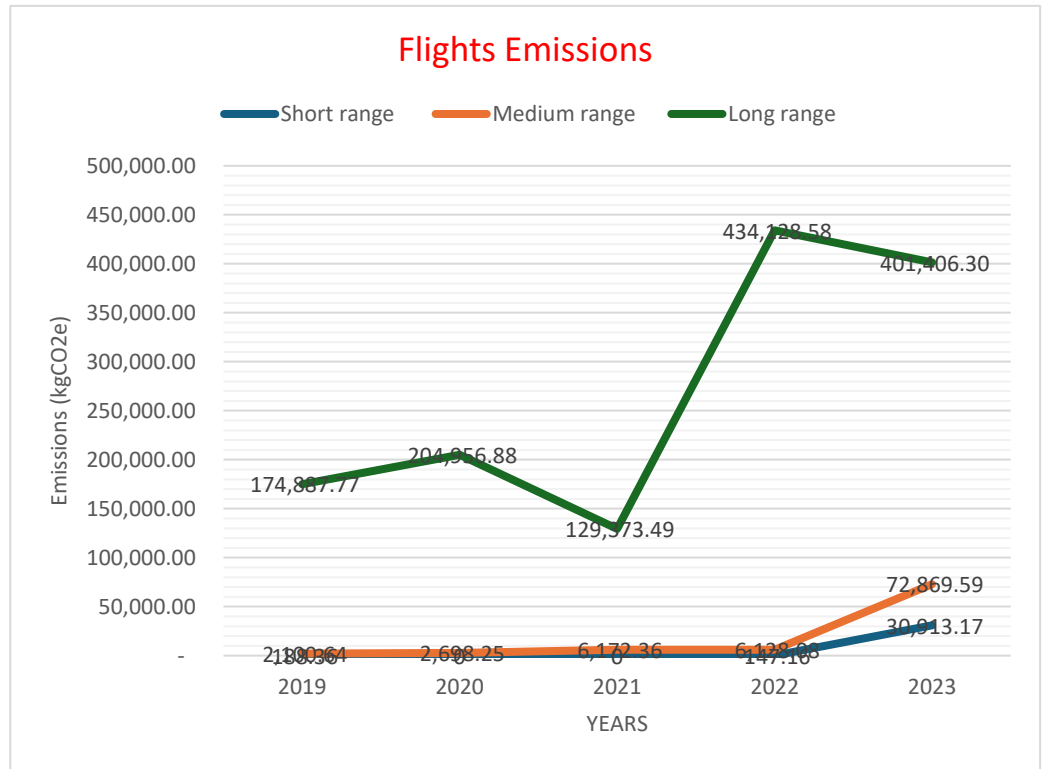


Our energy consumption in the office showed a decline during COVID period, but at as of 2023, there has been a sharp increase overall with our consumption at 4.4 tons compared to 3.6 in 2019.

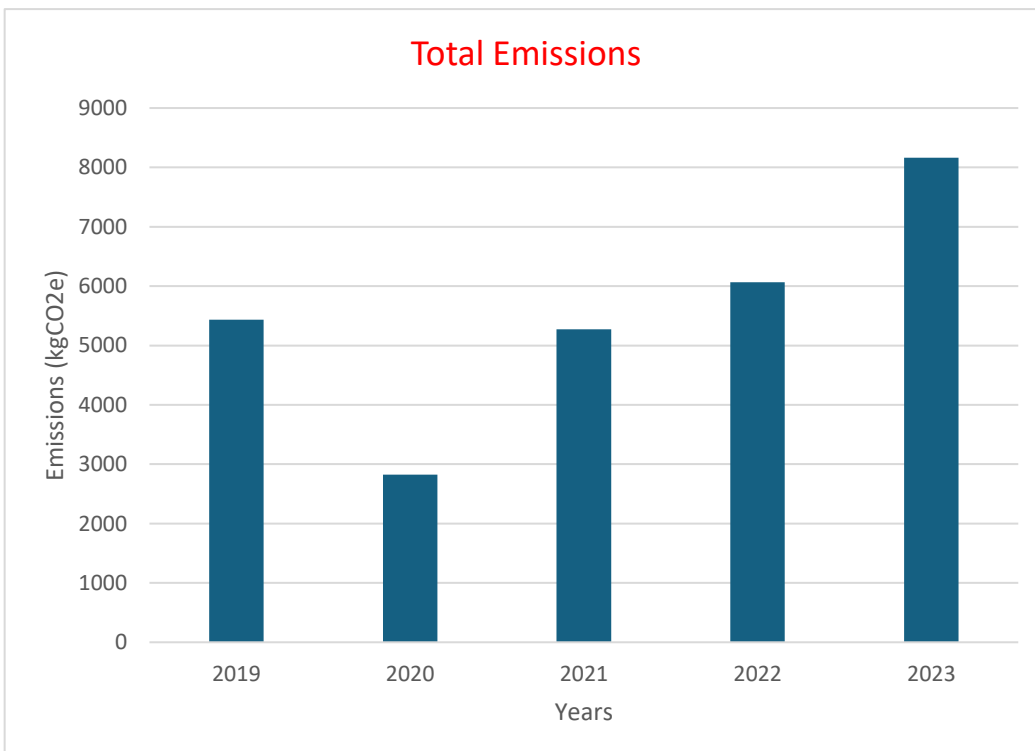
### Scope 3: Indirect emissions

#### Flights

While flight travels are key in MSF operations, 2023 had the highest total emissions across all ranges compared to the previous years at 505 tons of CO<sub>2</sub>e. Both short range (<1000kms) and medium range (1000-3500kms) flights were the highest emitters in 2023 compared to all years since 2019, with long range flight emissions (>3500kms) of 2023 being slightly lower than those of 2022.



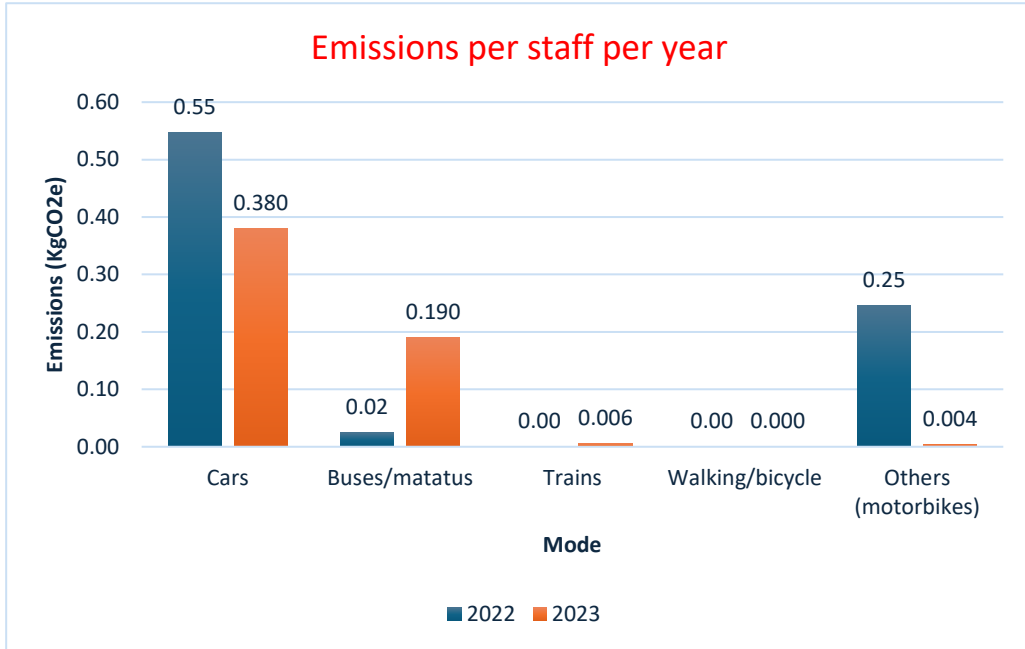
#### Taxis



Taxi commute is essential in activities and events to and from the office in MSF EA. Since 2019, our taxi emissions have been increasing gradually as shown in the figure on the left, with 5.4 tons in 2019, and 8.2 tons in 2023.

## Commuting

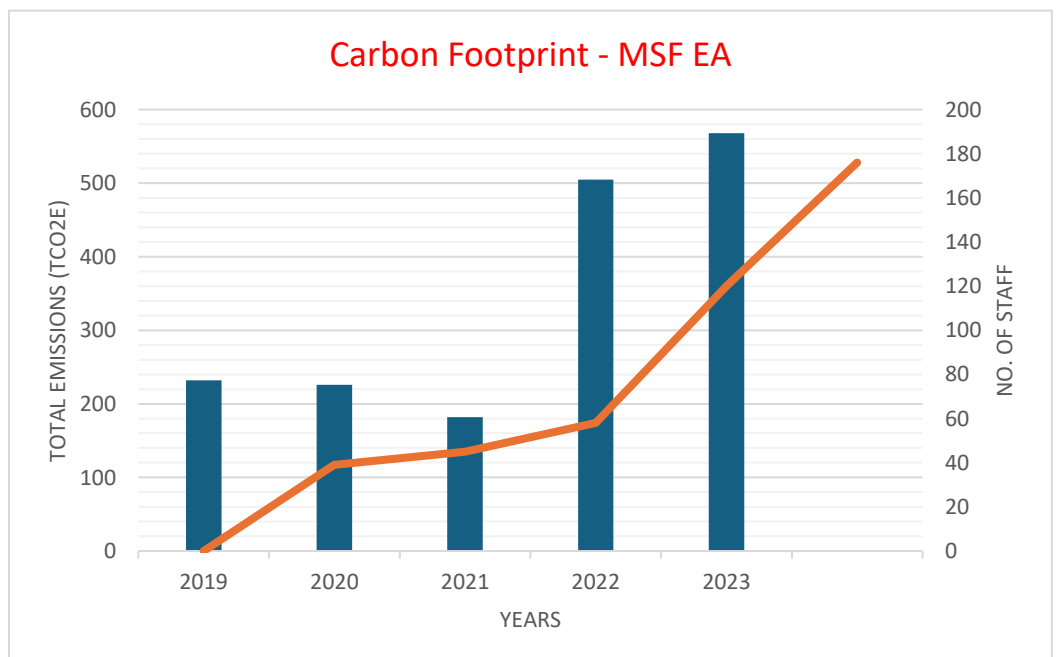
Commuting from home to the office daily/weekly contributes to the amount of carbon emissions per staff generated throughout the year. Emissions from 2022 were compared to 2023 as seen in the figure below, and it is interesting to note that while private cars contributed much emissions per staff



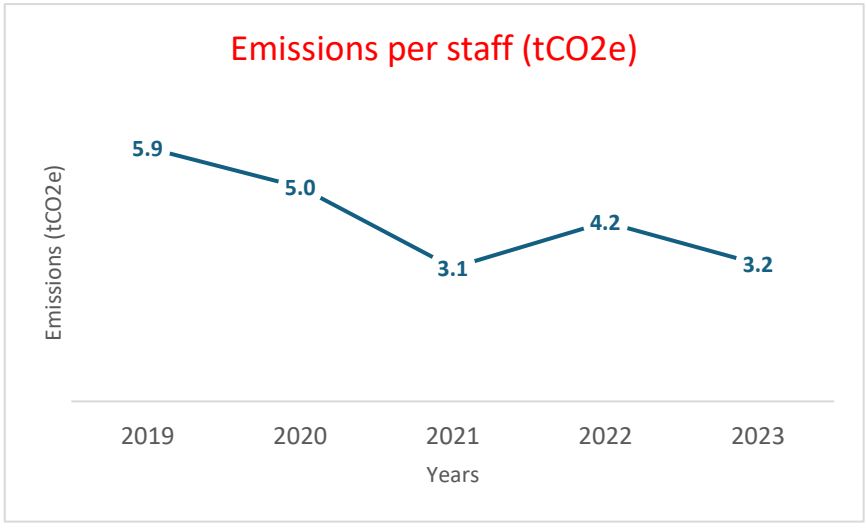
per year in 2022, public transport modes of buses and matatus were used more in 2023. Other modes being motorbikes also showed lower emissions, hence usage in 2023 compared to 2022.

## Carbon emissions, MSF EA

The total overall emissions of MSF Eastern Africa as of 2023 was at **568 tons of CO2e**, compared to 232 tons in 2019, as shown on the graph. The rise is mainly due to the number of staff which has grown from 39 in 2019 and 176 in 2023.



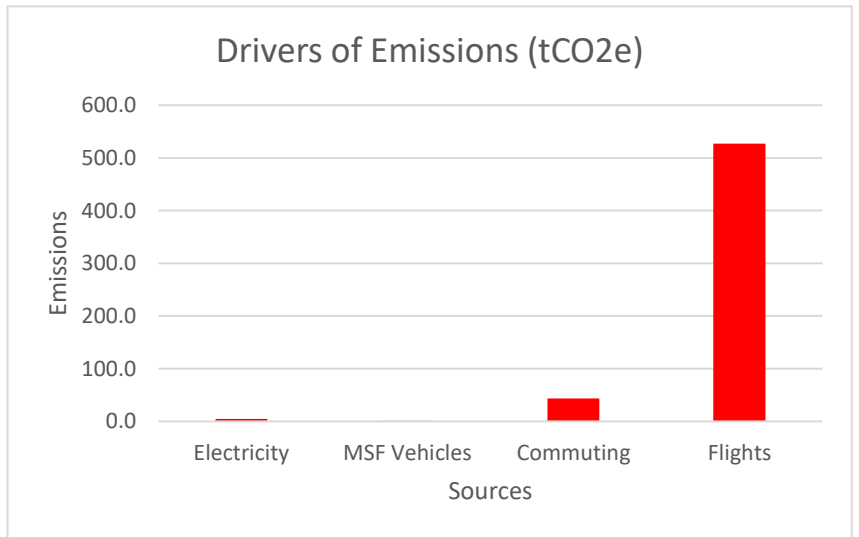
### Emissions per staff (tCO2e)



While the total office emissions show as increase, the emissions per staff (tCO2e) show a decline with 2019 at 5.9 tons compared to 3.2 tons in 2023.

### SUMMARY

The 2019 baseline of 5.95 tCO2e for an MSF Eastern Africa staff targets a reduction to 2.95 tons of CO2e per staff per year by 2030. While other emission factors from the toolkit such as freight, home office, service providers, et cetera are not accounted for in these results, flights still contribute highest by emitting around 90% of 2023’s total emissions.

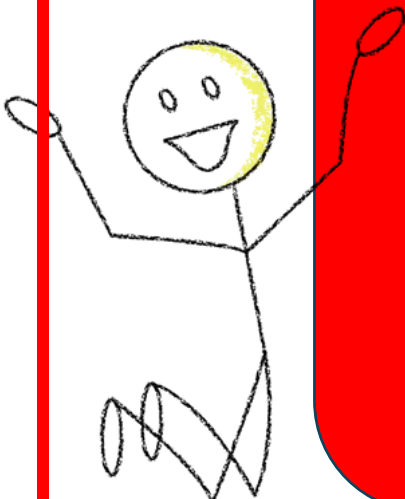


Even though we note that our numbers are going up in the office, we would like to emphasize and encourage the development of an air travel policy within the organization which will enable us to achieve our 50% reduction.

### Tips to reducing our carbon footprint

- Reduce energy consumption by switching off electrical appliances, including lights when not in use.
- Consider walking, carpooling or public transport instead of driving each day, unless you must.
  - Favor the use of digital files and limit printing.
- Waste segregation: *refuse, reduce, reuse, repurpose and repair, recycle*

And lastly, behavioral change for all staff in environmental and climate awareness



# Temperature change in Kenya

1901

2012

